



City of Fort Myers Caloosahatchee Connect Project

March 10, 2023

In 2018, the City of Cape Coral and the City of Fort Myers entered into an interlocal agreement to construct a pipeline across the Caloosahatchee River to transmit reclaimed water from Fort Myers to Cape Coral. The City will send up to 12 million gallons of water per day to Cape Coral to help maintain freshwater canal levels and provide property owners with water for irrigation and for fire protection services. This will also allow the City of Fort Myers to dispose of surplus reclaimed water in an environmentally friendly way, while reducing the need to discharge into the Caloosahatchee River.

Contractors for the City of Fort Myers are building a water reclamation facility at the South Advanced Wastewater Treatment Plant (SAWWTP) on Matthew Drive and installing a new reclaimed water transmission main. The reclaimed water main is expected to be constructed using a combination of traditional open-cut (trench) pipe installation and microtunneling trenchless technology. The pipeline will span from the SAWWTP on Matthew Drive, along Barkley Circle, then across Summerlin Road to Royal Palm Square Boulevard to Edwards Kontinos Drive to the connection point in the greenspace on San Marcos just south of Midpoint Bridge where it will connect to the City of Cape Coral's portion of the reclaimed water pipe being installed.

Construction Look Ahead **Caloosahatchee Connect Reclaimed Water Main Project**

What to expect week of March 13, 2023 *(Changes Shown in Red)*

Barkley Circle remains open at the intersection of Barkley Circle and Summerlin Road (First Assembly of God Church entrance) to just north of Matthew Drive.

Barkley Circle/Matthew Drive intersection

The Matthew Drive/Barkley Circle intersection is closed to ALL through traffic. Matthew Drive will close between 1550 Matthew Drive and 1600 Matthew Drive. See detours below.

To access Barkley Circle NORTH of Matthew Drive:

Motorists must use the Summerlin Road/Barkley Circle intersection (near First Assembly of God Church) to access businesses & residences north of Matthew Drive.

- To access Lee Health - Associates in Internal Medicine (1569 Matthew Drive), motorists must use the Summerlin Road/Barkley Circle intersection north of Matthew Drive. This Matthew Drive driveway will be closed during this work.

To access Barkley Circle SOUTH of Matthew Drive:

Motorists must use the westernmost Matthew Drive/Barkley Circle intersection to access Barkley Circle businesses/residences south of Matthew Drive.

- To access Midtown Professional Center (1560 Matthew Drive) & ProMedica Skilled Nursing and Rehabilitation (1600 Matthew Drive), motorists must use the

westernmost Matthew Drive/Barkley Circle intersection during this closure. The Matthew Drive driveways will be closed during this work.

To access The Park at Murano Apartments Homes with driveways on Matthew Drive, Sam Fleishman Regional Park, Fort Myers Aquatic Center and Fort Myers Racquet Club:

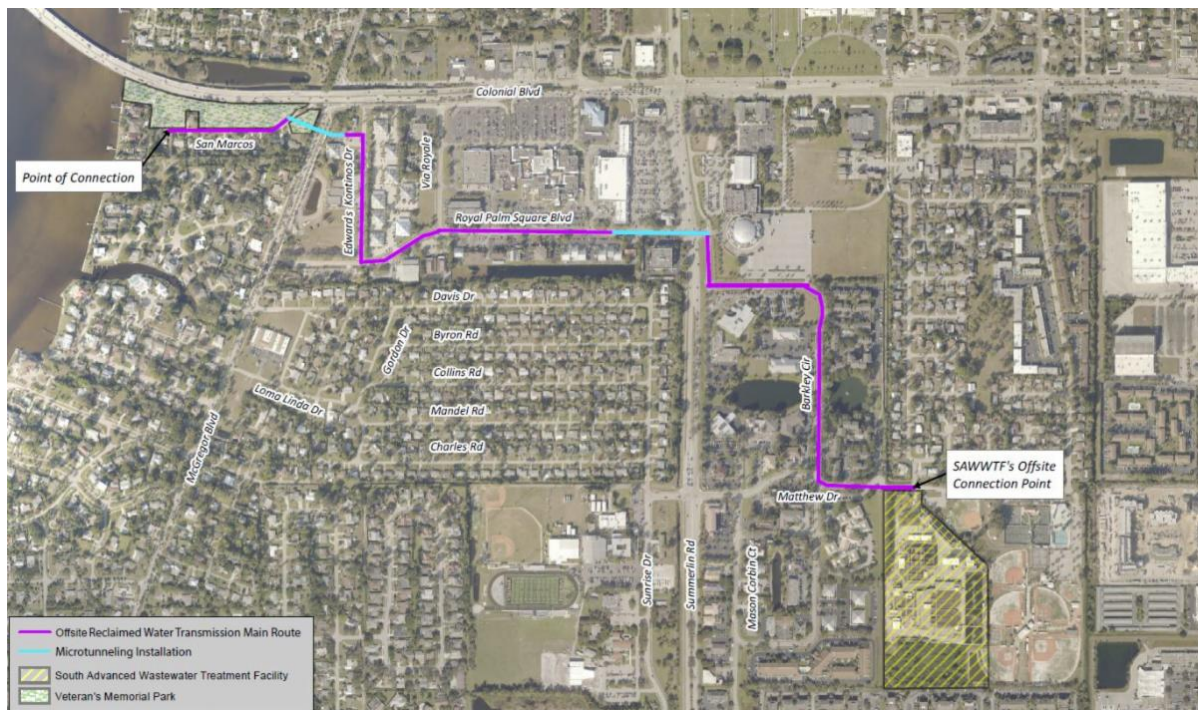
Motorists must access properties east of the Matthew Drive/Barkley Circle intersection from Bowling Green Boulevard, south on West Drive then west on Matthew Drive. The westernmost Matthew Drive driveway will be closed during this work.

- This closure will remain in place 24 hours per day until further notice. All driveways remain open at this time.

Drivers, pedestrians and bicyclists should use caution and be aware of construction equipment and vehicles entering/exiting streets in the project area. Motorists should expect lane shifts and intermittent closures during these activities. Some sidewalks may be closed during the project.

This schedule is subject to change due to underground conditions, underground conflict with other utilities and availability of workforce and materials. This project is expected to be completed in Spring/Summer 2023.

For additional information, contact the Public Information Consultant for the project, Cella Molnar & Associates, Inc. at 239-337-1071 or info@CaloosahatcheeConnect.com. For more information, visit the project website at www.CaloosahatcheeConnect.com.



[Click Here to Enlarge Map](#)

Cella Molnar & Associates | 1631 Hendry St., Fort Myers, FL 33901

[Unsubscribe cbailey@cella.cc](mailto:cbailey@cella.cc)

[Update Profile](#) | [Constant Contact Data Notice](#)

Sent by info@caloosahatcheeconnect.com